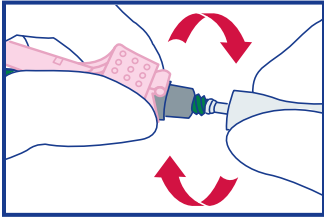
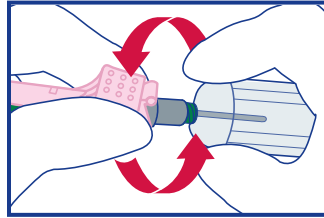


Recommended Technique for Use of BD Vacutainer® One-Use Holder

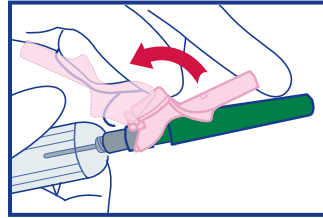
with BD Vacutainer® Eclipse™ Blood Collection Needle



1. Holding both pink safety shield and colored needle cap, twist and remove white needle cap.

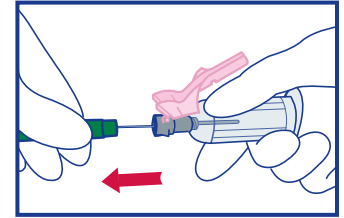


2. While holding the pink safety shield and the colored needle cap firmly, thread holder onto the needle until it fits securely and the needle is fully seated onto the holder.

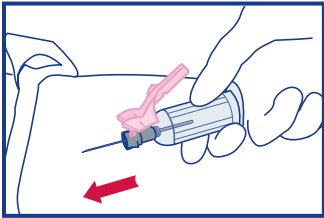


3a. Gently position pink safety shield straight back toward the holder.

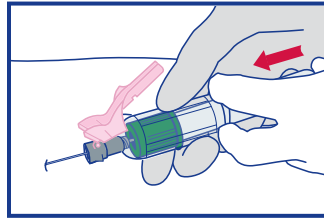
Note: The needle bevel is always in position for venipuncture when the pink safety shield is facing up. **DO NOT** twist or rotate the pink safety shield.



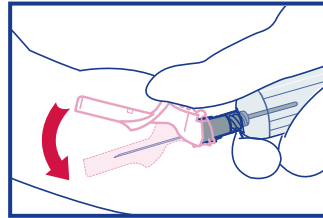
3b. Twist and pull colored needle cap straight off.



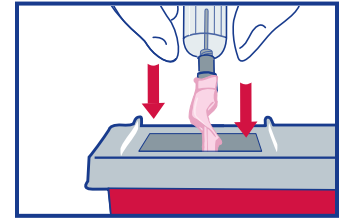
4. Holding the barrel of the holder, perform venipuncture per your facility's procedure.



5. Using your other hand, insert the required tubes into the holder using the index and middle fingers to grip the flanges.¹ Continue to hold the tube in place while it fills.

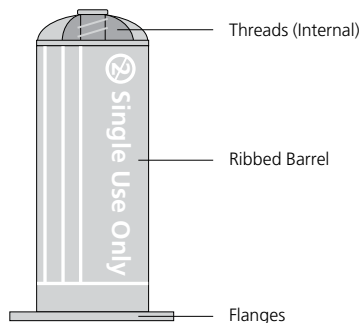


6. Immediately after removing needle from vein, position thumb squarely on pink safety shield and push pink safety shield forward to cover needle. An audible click may be heard. Lock shield into place and inspect. **DO NOT** attempt to engage safety shield by pressing against a hard surface.



7. Discard immediately into an approved sharps disposal container. **DO NOT** remove the needle from the holder. Dispose of the needle and holder as one unit into nearest sharps container. **DO NOT REUSE.**

BD Vacutainer® One-Use Holder



Ordering Information

Reference Numbers:

BD Vacutainer® One-Use Holder

364815

BD Vacutainer® Eclipse™ Blood Collection Needles

368607 21 G x 1 ¼"

368608 22 G x 1 ¼"

¹ CLSI Guidelines, H3-A6, Vol. 27, No. 26, Section 8.9 (8)

FOR SINGLE USE ONLY

BD Global Technical Services: 1.800.631.0174

BD Customer Service: 1.888.237.2762

www.bd.com/vacutainer

