



Small  
Size **Big**  
Impact



## New SCOTT® SLIMROLL\* Towel System

Now the company that brought you innovative compact folded towel dispensing is on a roll – with the new SCOTT® SLIMROLL\* Towel System. It's a true breakthrough in touchless hard roll technology, proving that good things do come in small, high performance packages!



# Introducing The New **SCOTT® SLIMROLL\* Towel System**

## Small Size. Big Impact.

How do you fit touchless, high capacity towel dispensing into a small space?  
With the new SCOTT® SLIMROLL\* Hard Roll Towel System.

It lets you use a roll towel dispenser in places you didn't think it was possible.  
Like right next to the sink. Or at a nurses' station where you've never been able to fit a roll towel dispenser before. Just look at all the benefits that this innovation brings to you.

Small Size **Big** Impact

Dries more hands in less space

Higher capacity than folded towel dispensers for less waste and maintenance

ADA compliant dispensing that's highly accessible and easy to use without the cost and concerns of batteries

Automatic transfer stub roll feature and emergency feed knob that reduce waste and complaints

Includes dependable SANITOUCH\* dispenser module. Touch only the towel you use

SCOTT® Hard Roll Towels are FSC Certified and exceed EPA minimums for post consumer waste content

Nearly 50% smaller than standard SANITOUCH\* dispensers. Its small footprint and reduced depth allow mounting in tight places

10" pre-cut sheet delivers 696 towels per roll





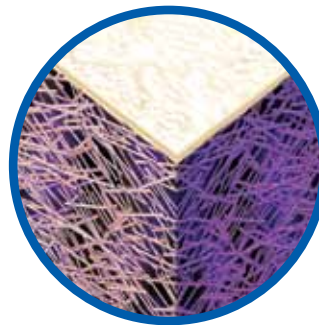
## Small Size Mounts Closer To The Sink

The new SCOTT® SLIMROLL\* Towel System is so small that you can mount it closer to the sink to help eliminate the slip hazard caused by dripping hands. It not only delivers towels where you need them, it delivers more towels in less space, reducing change-outs, run-outs and complaints.

## Big Towel Absorbency That Reduces Waste

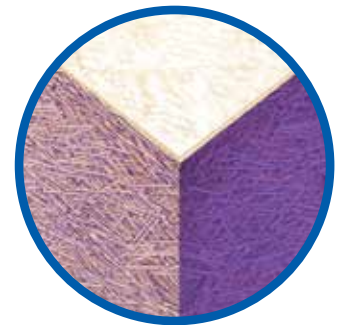
Looking for environmentally responsible hand drying? SANITOUCH\* Dispenser technology delivers hygienic, touchless dispensing without the expense and disposal concerns of batteries. SCOTT® Hard Roll Towels are FSC Certified and exceed EPA minimums for post consumer waste content.

Our towels also feature ABSORBENCY POCKETS\* that absorb so effectively that you use less to dry hands. Combine that with one-at-a-time dispensing and a stub roll feature, and you virtually eliminate wasted paper – not to mention improving cost in use.



### UCTAD Technology with ABSORBENCY POCKETS\*

Provides excellent absorbency and hand-drying performance.  
*KIMBERLY-CLARK PROFESSIONAL\**  
*KLEENEX® SCOTTFOLD\* Towel 01999*



### Competitive Wet Press Technology

Packed fibers cause water to sit on the towel, delaying absorbency and increasing waste.  
*Bay West 493 Towel; Green Seal Certified*









## New SCOTT® SLIMROLL\* Towel System

Smaller, more efficient, dries more hands in less space

### SCOTT® SLIMROLL\* Towel System

Code	Description	Color	Ply	Size (W x L)	Qty/Pack	Packs/Case	Case Count
12388	  SCOTT® SLIMROLL* Hard Roll Towels	White	1	8" x 580' 20.3cm x 176.8m	580'	6 rolls	3,480 ft.

Code	Description	Finish	Dimensions (W x H x D)	Case Count
13567 <sup>1</sup>	SLIMROLL* Hard Roll Towel Dispenser	Brushed Metallic	12" x 12.5" x 7" 30.48 cm x 31.75cm x 17.78cm	1
10442 <sup>1</sup>	SLIMROLL* Hard Roll Towel Dispenser	White	12" x 12.5" x 7" 30.48 cm x 31.75cm x 17.78cm	1
10441 <sup>1</sup>	SLIMROLL* Hard Roll Towel Dispenser	Smoke	12" x 12.5" x 7" 30.48 cm x 31.75cm x 17.78cm	1

 Meets EPA standards for minimum post consumer waste content: towels 40%  FSC Certified

<sup>1</sup> When installed properly, these dispensers meet the ADA Standards for Accessible Design, 28 CFR Part 36 (1994), local rules may vary.

**Mounts to recessed stainless steel folded towel dispenser with mounting bracket accessory (model no. 772412)**



Reduce Today, Respect Tomorrow\* is the KIMBERLY-CLARK PROFESSIONAL\* approach to sustainability. It begins with the understanding that the way we use resources today shapes the world of tomorrow. And it has led us to focus on reducing consumption at every stage of the product lifecycle – from design and manufacture to distribution and disposal. Reduction is the key to lowering the environmental impact of our activities as well as those of customers. To learn more, visit [www.kcproductoday.com/us](http://www.kcproductoday.com/us)

### Our Guarantee

Your total satisfaction means everything to us. If, for any reason, our products do not meet your expectations, Kimberly-Clark will reimburse you† for your initial purchase, via FREE product, for up to \$1,000.

For more information on KIMBERLY-CLARK PROFESSIONAL\*, visit us online at [www.kcprofessional.com](http://www.kcprofessional.com), contact your Kimberly-Clark Sales Representative, or call us at 1-888-346-GOKC (4652).

† Guarantee extended to consuming end-user accounts only.

Kimberly-Clark warrants that its products comply with K-C's standard specifications as of the delivery date to K-C's authorized distributors/direct purchasers. Except to the extent prohibited by applicable law: 1) **THIS WARRANTY IS IN LIEU OF ALL OTHER WARRANTIES, EXPRESS OR IMPLIED, INCLUDING ANY WARRANTY OF MERCHANTABILITY OR FITNESS FOR A PARTICULAR PURPOSE**; 2) K-C is not liable for any kind of special, incidental, or consequential damages; and 3) K-C's liability for breach of contract, tort, or other cause of action shall not exceed the product purchase price. Purchasers and users are deemed to have accepted the above warranty and limitation of liability, and cannot change the terms by verbal agreement or by any writing not signed by K-C. To the extent required by applicable law, K-C does not limit its liability for death/injury resulting from K-C's negligence.

®/\* Trademarks of Kimberly-Clark Worldwide, Inc. or its affiliates. Marques déposées de Kimberly-Clark Worldwide, Inc. ou de ses filiales.  
© 2010 KCWW K01767 K4249-10-03 11/10

Effective November 2010