

CryOmega®

Ordering Information

“CryOmega is superior to the cryosurgery canister with foam tips that I had been using previously. CryOmega is much easier to use, more precise and I am seeing far better results. Freeze times are also significantly shorter which makes me more apt to use cryotherapy for my pediatric patients. As a family medicine PA, CryOmega has become my choice for cryotherapy.”

Kristen White, PA-C



9034000 CryOmega®
Disposable cryosurgical unit containing a 16g nitrous oxide (N₂O) cartridge.



9034002 CryOmega® Twin Pack
Contains 2 CryOmega units, each containing a 16g nitrous oxide (N₂O) cartridge for your convenience.

Contact Premier® Medical Products for more information.

CryOmega is available through your medical or surgical supply distributor.

Available from:



Premier® Medical Products

1710 Romano Drive, Plymouth Meeting, PA 19462 U.S.A.
610-239-6053 • 888 PREM USA (773-6872) • Fax: 610-239-6171
cryomega@premusa.com • www.premusa.com

CryOmega® is a registered trademark of CryoConcepts LP. U.S. Patent # D681,807. Various U.S. Patents and International Patents Pending. ORM-D classification ground shipping only. Verucca-Freeze & Histofreezer are not registered trademarks of Premier Medical Products.

8690712 021515 Rev2 NKP10M



CryOmega®

Multi-Use Disposable Cryosurgical Device

Clinically effective direct spray of liquid nitrous oxide (-89°C/ -127°F) in a convenient and economical device

Easier Activation!



Simply rotate to activate.

Easier Trigger Operation!

“ I believe the CryOmega® device is appropriate for all Primary Care Physicians. It's a great way to introduce cryosurgery for physicians who don't realize how important full-time cryosurgery is for their practice.”

John E. Hocutt Jr., M.D., FAFP



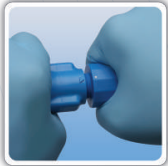
Online Video Tutorial!

Visit: www.premusa.com/cryomega



Premier® Medical Products
www.premusa.com

Hassle Free Activation



While holding the CryOmega® device with one hand, firmly grasp the knob at the end of the device with the other hand.



Firmly turn the knob clockwise **one** full rotation.



Make sure that the white dot on the knob aligns with the arrow on the device.



The device is now ready for use.
Important:
Do not turn the knob back. The device is now under pressure.

CryOmega® - Multi-use disposable cryosurgical unit containing 16g nitrous oxide (N₂O) cartridge.

Effective

Continuous direct spray of liquid nitrous oxide (-89°C/-127°F) produces clinically effective freezing versus canister-based systems. Pinpoint precision prevents destruction of healthy tissue.

Convenient

Activate once and the device is ready for use. No time wasted on pre-procedure tip saturation, filling of cryogen reservoirs, etc. No additional accessories or cartridges needed. Simply aim and spray!

Economical

Each unit has 4 minutes (240 seconds) of total spray time and can be used for multiple procedures. Recommended spray times for treating each of the FDA-cleared lesions are provided below.

Disposable

Simply dispose of the entire unit with normal medical waste when the internal nitrous oxide cartridge is empty.

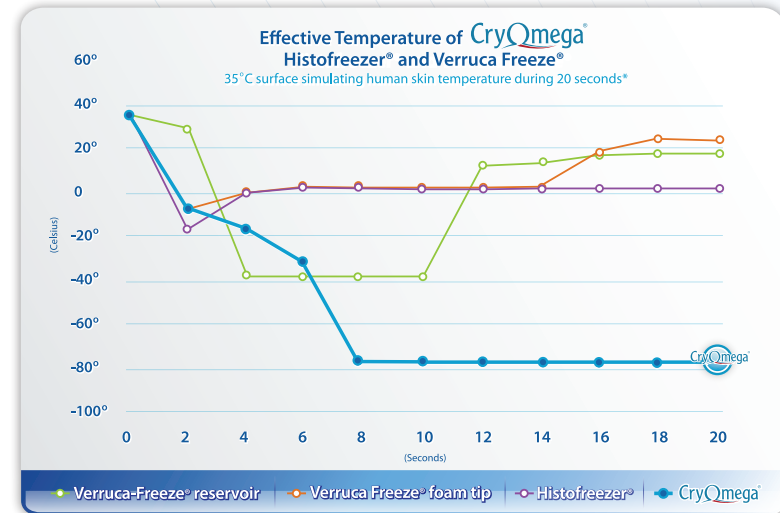
CryOmega® Treatment Spray Times (seconds by approved lesion)

Verruca Vulgaris	10 – 20		Actinic Keratosis	5	
Verruca Plantaris	10 – 20		Lentigo	2 - 5	
Verruca Plana	5 – 15		Molluscum Contagiosum	3 - 10	
Skin Tags	5 – 10		Genital Lesions	5 - 12	
Seborrheic Keratosis	5 – 10		Total Cartridge Spray Time	4 minutes (240 seconds)	

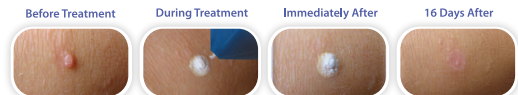
Cryosurgery is contra-indicated in patients with cryoglobulinemia. Please refer to Product Insert for relative contraindications and general precautions when using CryOmega.

Achieving low temperatures is the key to clinically effective and successful cryosurgical application!

By delivering a continuous direct spray of nitrous oxide, CryOmega consistently produces the temperatures required to successfully treat warts, skin tags and other common benign skin lesions in any clinical setting.



CryOmega®
Treatment of
Verruca Vulgaris
(One 8 sec. treatment)



Technique Tip:

During some procedures there may be a build-up of frost when using CryOmega. This frost can act as an insulator and prove beneficial in helping to maintain the desired temperature of the tissue. Room temperature and humidity, along with spray time, spray distance and spraying motion, play a role in frost build-up. Spray time is determined by the type and size of lesion treated. Recommended spray distance is approximately 1cm and should be applied in small circular motions.



Instructional online video tutorials featuring CryOmega are available and can be found at www.premusa.com/cryomega